

Endura™ Safari

THE MOST VERSATILE HANDHELD GPS NAVIGATOR FOR ANY OUTDOOR ADVENTURE

High-performance navigation through combination of advanced mapping, trip computer, electronic compass, and barometric altimeter

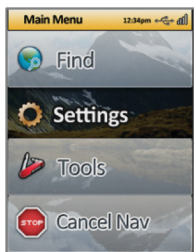
Unparalleled ease-of-use with combination of simplified touch screen interface and "hot key" physical buttons to quickly access main features

Multi-recreational with dedicated outdoor features and a large range of mapping options preloaded on plug & play Micro SD cards or web download

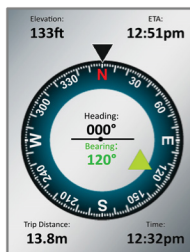


FEATURES AND BENEFITS:

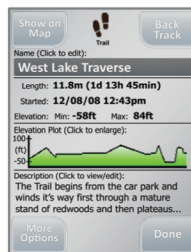
- **Color, 2.7" (6.8 cm) touchscreen optimized for outdoor use** combined with physical buttons
- **Advanced basemap** with detailed hillshade, primary and secondary roads, and key points-of-interest
- **Directly accepts GPX trails and POIs** from web communities or other sources
- **Plug-and-play and downloadable mapping options** such as Fishing Hot Spots®, etc.
- **Multimedia** MP3/voice notes, picture, and video players – for entertainment or viewing trail camera photos
- **Trip computer** - records trails, altitudes, trip times, speed and distance traveled
- **Power standby mode** saves battery life while allowing ultra fast startup
- **Fully turn-by-turn navigation capable** for car, motorcycle, cycling, etc. (with optional purchase)



Main Menu



Compass



Route Details



Altimeter

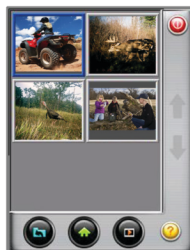


Photo Viewer



Optional Mapping

KEY PHYSICAL SPECIFICATIONS:

- Dimensions (HxWxD): 5.1" x 2.3" x 1.2"
130 mm x 60 mm x 31 mm
- Weight: 5.8 oz/165 g (without batteries)
- Micro SD card slot for up to 32 GB cards
- Mini USB port for power and data cables
- Waterproof (IPx7) with rubber armoring
- Speaker, headphone jack, and microphone
- Uses two AA batteries (not included)

UPC : 42194533896
Part #: 125-39

All information subject to change without notice.

Visit www.lowrance.com/endura to learn more.

